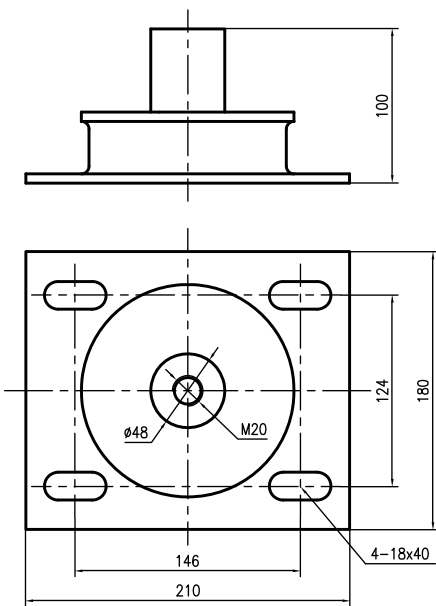
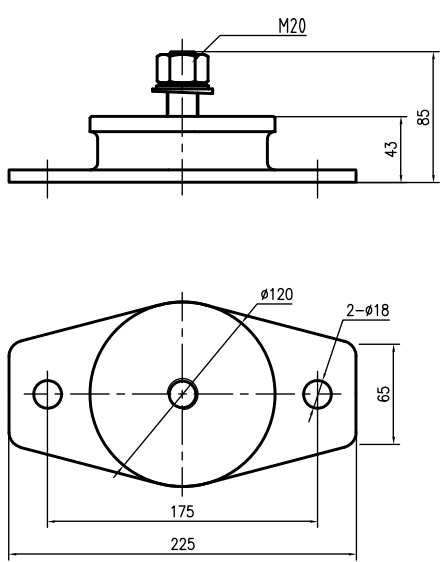


**Absorber**

Hardness :HS80±5  
Defurmentation :1200kg/2mm  
Max Load :6000kg  
Agglutinated Power : ≥25kg<sup>2</sup>/cm



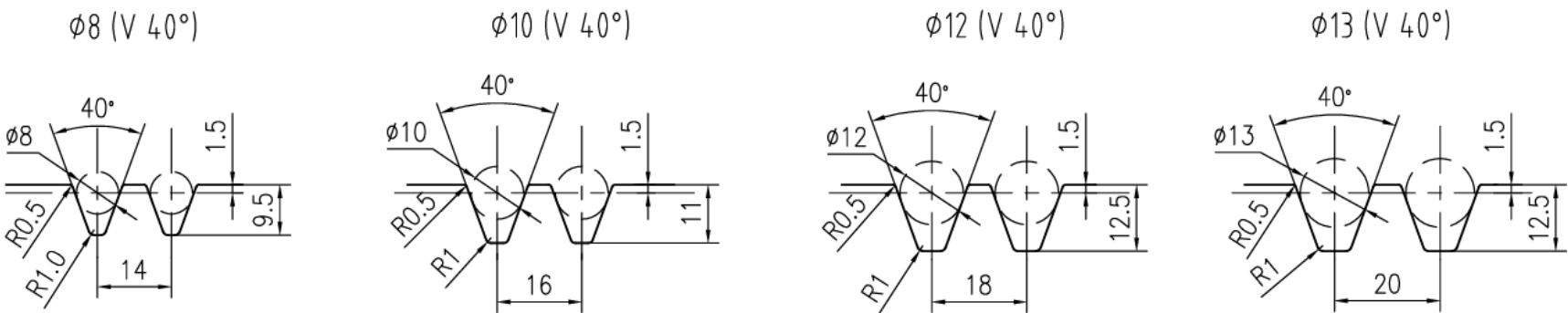
A Type Absorber



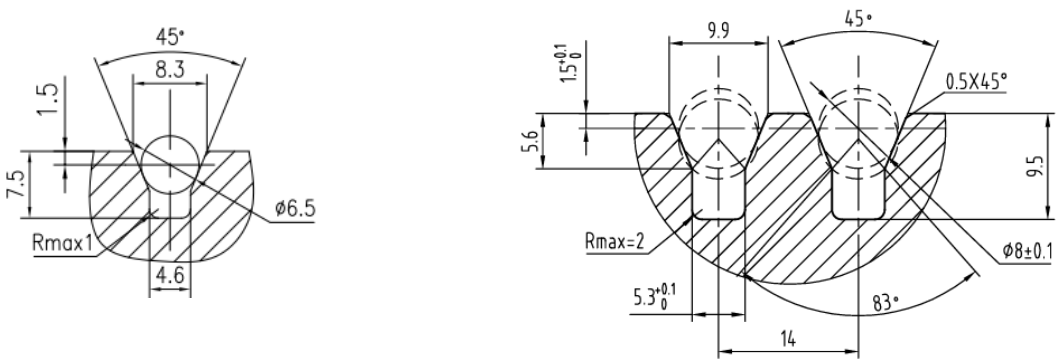
B Type Absorber

**STANDARD GROOVES**

SGL type machines SGL:



RGL type machines:



**REMARK**

This is our factory standard configuration groove.  
The user should calculate according to the elevator traction condition and the safety factor of rope.